



Economic Brief

State Representative Rosemary Brown

February 2015

General Fund Revenue Collections Bring in \$2.4 Billion

General Fund revenue collections for the month of January were \$2.4 billion, which is \$90 million more than expected.

Collections of \$127 million for corporation taxes came in below Department of Revenue projections by \$1 million. Sales tax collections of \$844 million were higher than expected, coming in \$7 million above the official estimate. The Personal Income Taxes collected were \$1.1 billion, which was below estimate by \$14 million.

Year-to-date General Fund collections of \$15.7 billion are above the official estimate by \$360 million.

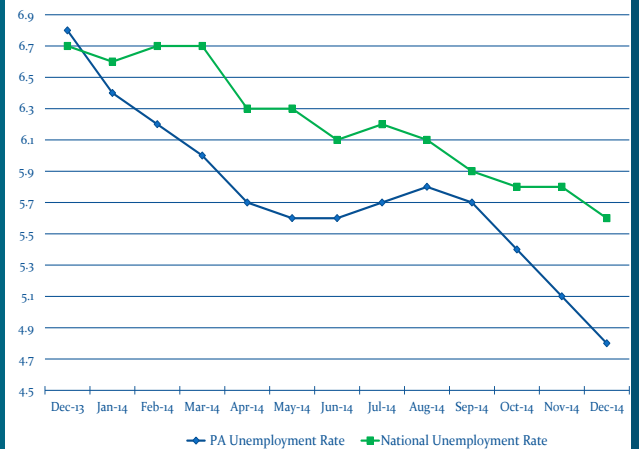
EMPLOYMENT STATISTICS

	December 2014	Monthly Change	
Labor Force	6.37 Million	-1,000	↓
Unemployment Rate	4.8%	-0.3%	↓
Total Employment	6.058 Million	+13,000	↑

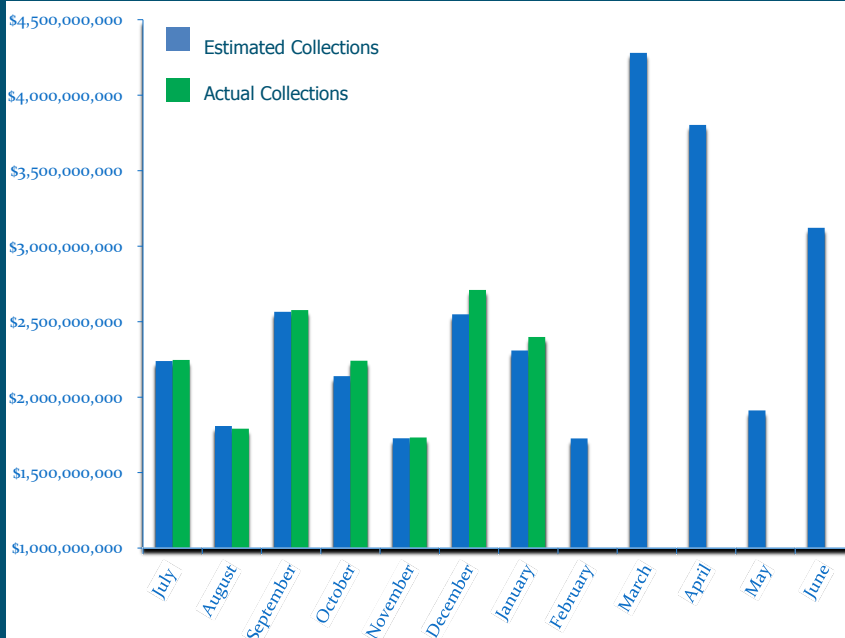
12-Month Change

Total Employment	+68,000
Unemployment Rate	-2.0%

12-Month Unemployment Rates



General Fund Revenue vs. Estimates



January Revenue Collections

Estimate	Actual	
Total General Fund	Total General Fund	↑
\$2.3 Billion	\$2.4 Billion	
Corporation Taxes	Corporation Taxes	↓
\$128 Million	\$127 Million	
Sales Taxes	Sales Taxes	↑
\$838 Million	\$844 Million	
Personal Income Taxes	Personal Income Taxes	↓
\$1.12 Billion	\$1.1 Billion	
All Other Taxes	All Other Taxes	↑
\$202 Million	\$217 Million	
Non-Tax Revenue	Non-Tax Revenue	↑
\$18 Million	\$101 Million	